

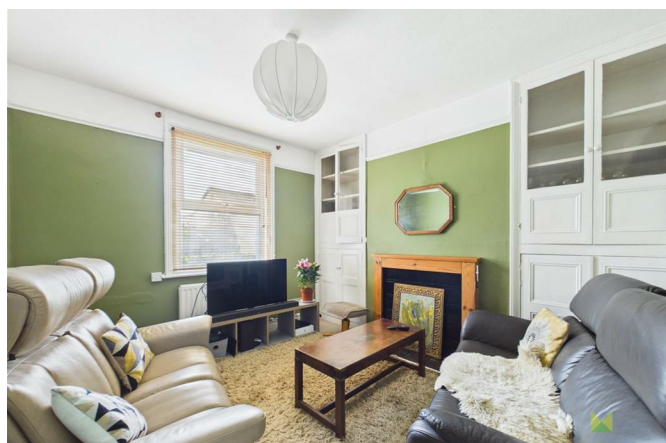
3 Oak Street Oswestry SY11 1LJ



2 Bedroom House - Terraced
Offers In The Region Of £165,000

The features

- NO ONWARD CHAIN
- CLOSE TO MARKET TOWN CENTRE
- DINING ROOM AND KITCHEN
- FITTED BATHROOM AND LOFT ROOM
- VIEWINGS ESSENTIAL
- PERFECT FOR FIRST TIME BUYERS
- LOUNGE WITH FEATURE FIREPLACE
- TWO GOOD SIZED BEDROOMS
- REAR COURTYARD AND OUTBUILDING
- ENERGY PERFORMANCE RATING



***** SPACIOUS TWO BEDROOM MID TERRACED MEWS WITH NO ONWARD CHAIN*****

An opportunity to purchase this charming two bedroom mid terraced mews with additional room in the loft which has potential to be a further room subject to relevant planning and consents. Perfect for first time buyers, and investors.

Occupying an enviable position within walking distance of the Market Town centre, having ease of access to a wealth of local amenities and transport links including A5/ M54 motorway network.

Briefly comprising of entrance hall, lounge, dining room, kitchen, two double bedrooms and bathroom. Further loft room and cellar.

Having benefit of gas central heating, enviable position close to amenities, front and rear courtyard garden.

Viewings essential.

Property details

LOCATION

The property occupies an enviable position in the heart of this popular Market Town a pleasant stroll from all of its amenities including supermarkets, independent stores, restaurants/public houses, cafe's, schools, recreational facilities and parks. For commuters there is ease of access to the A5/M54 motorway network and the nearby railway station at Gobowen which has links to Shrewsbury, Chester and London.

ENTRANCE HALL

Entrance door leads into the Entrance Hall with wooden flooring. Radiator, stairs leading to the First Floor Landing. Doors leading off,

LOUNGE

With window to the front aspect. Feature fireplace with surround and hearth, alcove storage cupboards. Radiator.

DINING ROOM

With window to the rear aspect Feature fireplace with surround and hearth, alcove storage cupboards. Quarry tiled flooring, Radiator.

KITCHEN

Fitted with a range of base level units with work surface over, single drainer sink with mixer tap, space for freestanding cooker, and fridge/ freezer. Partially tiled walls, exposed ceiling beam, wall mounted boiler. Window to the rear and side aspect. Door leading out to the rear garden. Tiled flooring.

FIRST FLOOR LANDING

Stairs lead from the Entrance Hall to the First Floor Landing, wooden flooring. Radiator, window to the front aspect. Doors leading off.

BEDROOM 1

With window to the front aspect. picture railing. Radiator,

BEDROOM 2

With window to the rear aspect. Radiator,

BATHROOM

With window to the rear aspect and suite comprising of panelled bath with shower head over, WC and wash hand basin. Radiator.

LOFT ROOM

Stairs lead from the First Floor Landing to the loft room with velux window. Doors opening to storage cupboard.

OUTSIDE

To the front of the property there is a pathway leading to

the entrance door, low level hedge and area laid with gravel.

To the rear garden there is a small courtyard garden, brick built outbuilding.

GENERAL INFORMATION

TENURE

We are advised the property is Freehold . We would recommend this is verified during pre-contract enquiries.

SERVICES

We are advised that mains services are connected.

COUNCIL TAX BANDING

As taken from the Gov.uk website we are advised the property is in Band E - again we would recommend this is verified during pre-contract enquiries.

FINANCIAL SERVICES

We are delighted to work in conjunction with the highly reputable 'Ellis-Ridings Mortgage Solutions' who offer FREE independent advice and have access to the whole market place of Lenders. We can arrange for a no obligation quote or please visit our website Monks.co.uk where you will find the mortgage calculator. <https://monks.co.uk/buy/mortgage-calculator/>

LEGAL SERVICES

Again we work in conjunction with many of the Counties finest Solicitors and Conveyancers. Please contact us for further details and competitive quotations.

REMOVALS

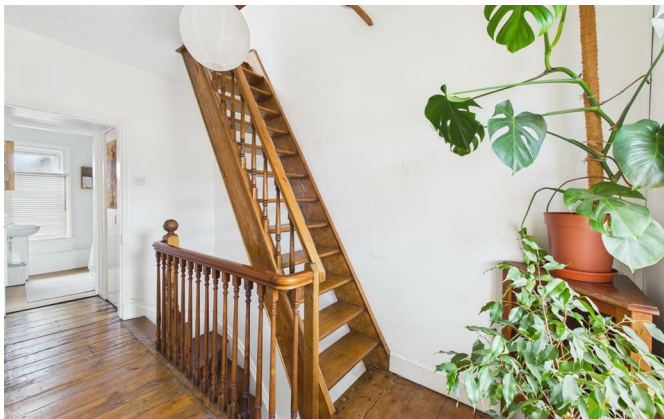
We are proud to recommend Daniel and his team at Homemaster Removals. Please contact us for further details.

NEED TO CONTACT US

We are available 8.00am to 8.00pm Monday to Friday, 9.00 am to 4.00pm on a Saturday and 11.00am to 2.00pm on Sunday, maximising every opportunity to find your new home.

3 Oak Street, Oswestry, SY11 1LJ.

2 Bedroom House - Terraced
Offers In The Region Of £165,000





Judy Bourne

Director at Monks

judy@monks.co.uk

Get in touch

Call. 01691 674567

Email. info@monks.co.uk

Click. www.monks.co.uk

Oswestry office

16 Church Street, Oswestry,
Shropshire, SY11 2SP

We're available 7 days a week

HOME – four words that define who,
and what we are:

Honest, Original, Motivated, Empathetic

Energy Efficiency Rating		
	Current	Potential
Very energy efficient - lower running costs		
(92 plus) A		
(81-91) B		
(69-80) C		
(55-68) D		
(39-54) E		
(21-38) F		
(1-20) G		
Not energy efficient - higher running costs		
England & Wales	EU Directive 2002/91/EC	80

Environmental Impact (CO ₂) Rating		
	Current	Potential
Very environmentally friendly - lower CO ₂ emissions		
(92 plus) A		
(81-91) B		
(69-80) C		
(55-68) D		
(39-54) E		
(21-38) F		
(1-20) G		
Not environmentally friendly - higher CO ₂ emissions		
England & Wales	EU Directive 2002/91/EC	

Monks for themselves and for the vendors of this property, whose agents they are give notice that:

- These particulars provide a general outline only for the guidance of intended purchasers and do not constitute part of an offer or contract.
- All descriptions, dimensions and distances are approximate, references to state and condition, relevant permissions for use and occupation and other details are provided in good faith and believed to be correct.
- No person in the employment of Monks has any authority to make or give any representation or warranty whatever in relation to this property.
- Electricians and other appliances mentioned in these particulars have not been tested by Monks. Therefore prospective purchasers must satisfy themselves as to their working order.